

Trustix LAN Server

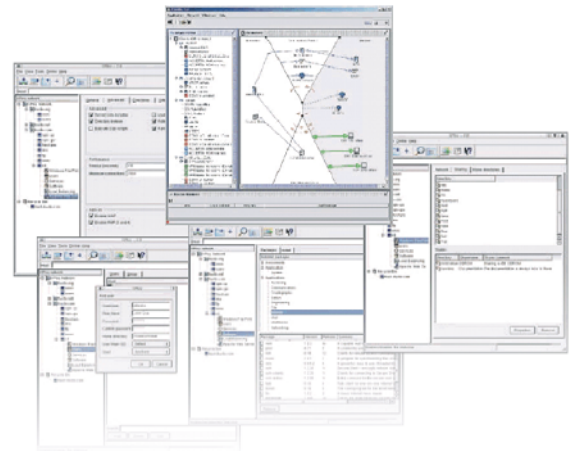
Small/ Medium Business

Trustix™

LAN Server - Cost effective resource sharing

As part of a co-ordinated computer networking strategy, there is no single appliance of greater importance than a dedicated Local Area Network server. LAN's represent the next stage of evolution over sprawling, inefficient peer-to-peer networks- providing a centralized server connected to all workstations and providing effective sharing of directories, files, printers and other hardware resources.

Based on Trustix™ Secure Linux- the most secure and stable platform for enterprise solutions- Trustix™ LAN servers are designed to replace or complement existing Windows® or UNIX® servers- at a fraction of their price and with no compromise in functionality.



Keeps pace as your business grows

As your business expands, your network grows larger and the demands placed on it grow ever more intense. Network traffic will slow down, information could be lost and communications between employees impaired. The demands placed on resources such as printers will lead to unacceptable queuing times. Trustix™ LAN servers will absorb all this extra traffic and provide a stable and effective platform for the distribution of resources and control of hardware resources. Your Trustix LAN represents outstanding ROI- paying for itself from day one- and it becomes more valuable with each additional user- The law of diminishing returns does not apply here!

- **Promote** employee teamwork by sharing files and folders
- **Slash** investment costs with IT resource sharing
- **Eliminate** employee downtime with internet connection sharing
- **Create** essential backups of your critical data with NetVault
- **Authenticate** users with encrypted password support
- **Simplify** and centralize network management with Xploit™ GUI

In harmony with your current network

Trustix™ LAN server acts as a Primary Domain Controller for Windows workstations- authenticating usernames and passwords in order to log into the network and access resources. Due to the server's flexibility, it can replace or co-exist with any Microsoft Windows Server- ensuring the utmost integration with your existing infrastructure. Similarly, Trustix™ LAN is compatible with UNIX NFS

and Windows operating system via compliance with the Windows file sharing protocol, SMB (using the Linux Samba engine.) It can also run as a Windows domain logon server.

As well as providing complete Windows networking support, Trustix™ LAN can also adopt the role of your network WINS server- resolving the names and IP addresses of all your computers. Incorporating a DHCP server for managing automatic IP addressing- Trustix™ LAN server is as powerful as it is versatile.

Trustix™ LAN servers will consummately manage your network's resources. Enabling effective sharing of files and resources to promote teamwork, seamless integration with existing infrastructures and immediate increases in productivity.

Trustix™ LAN server- the backbone of your network.

Trustix™

New Court, Regents Place, Regents Road, Manchester, Salford, M5 4HB,
United Kingdom Tel Sales: +44 (0) 161 874 7080
Fax Sales: +44 (0) 161 877 1767

www.trustix.com

© 1998-2004 Comodo. Trustix™, XPLOY™, SWUp™, and the Trustix Logo are trademarks of Comodo Trustix Limited. SIDEN™, SEEOS™, EnterpriseSSL™, InstantSSL™, TrustLogo™, VerificationEngine™, UserAnywhere™ are trademarks of Comodo. All other trademarks and registered trademarks are the property of their respective owners.

Information in this document is subject to change without notice.
Part Number 2004.TRUSTIX PERSONAL FIREWALL:OVERVIEW.001